

PART OF SEC. 29-30, T.7N., R.3E., S.L.B. & M.
EVERGREEN PARK SUBDIVISION NO. 1

LOTS 283-285, 406-413, 491-497, 521-530

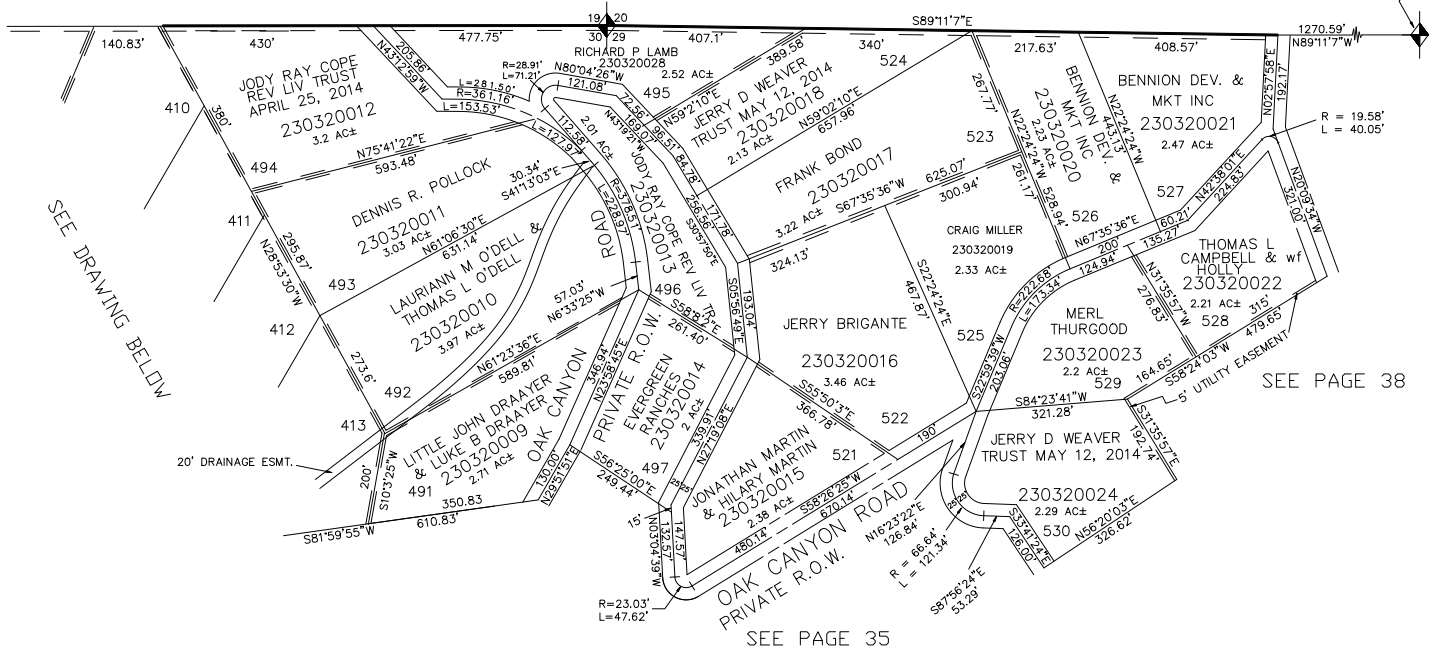
TAXING UNIT: 58

IN WEBER COUNTY

SCALE 1" = 200'

SEE PAGE 13

N. 1/4 SEC. 17N., R.3E.

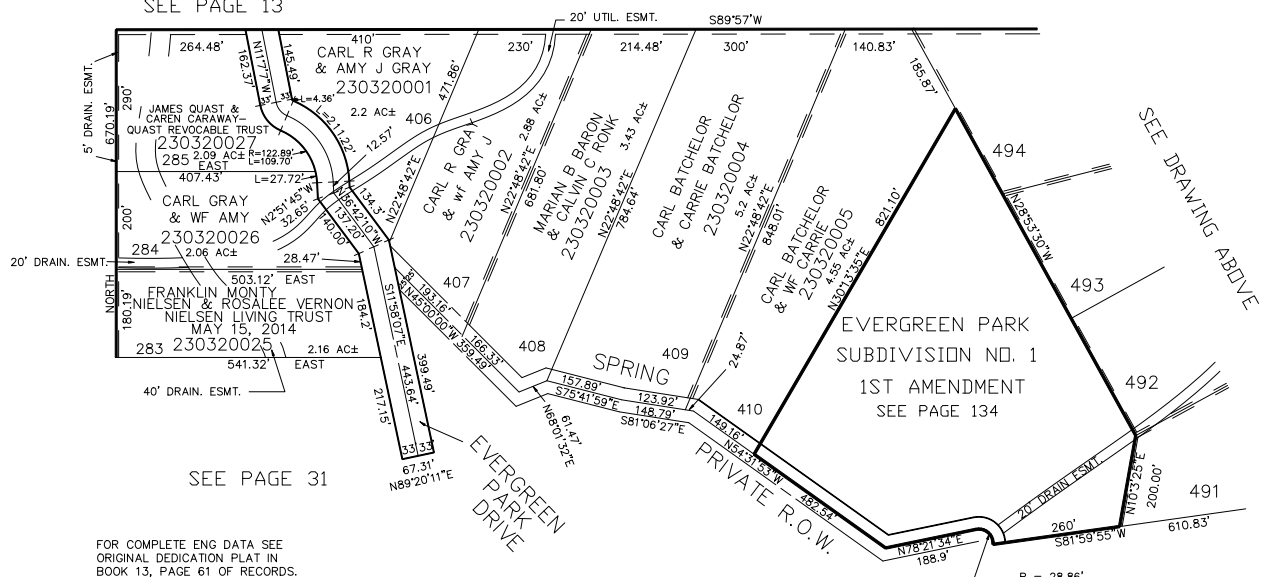


SEE DRAWING BELDW

SEE PAGE 38

SEE PAGE 35

SEE PAGE 13



SEE PAGE 31

SEE DRAWING ABOVE

EVERGREEN PARK
SUBDIVISION NO. 1
1ST AMENDMENT
SEE PAGE 134

FOR COMPLETE ENG DATA SEE
ORIGINAL DEDICATION PLAT IN
BOOK 13, PAGE 61 OF RECORDS.

ALL DASHED LINES SHOWN
ON LOT LINES ARE 10' UTILITY
EASEMENTS UNLESS OTHERWISE NOTED.

SEE PAGE 35